

Rail Handling Items:

115/132-141 Anchor Knocker



PN: AK450-JR

Dimensions: 57" x 36" x 32", 1,450 lbs.

Description: The Anchor Knocker is designed to remove all types of anchors from the rail with hard surfaced, bolted on knocker ear. These are bolted on precisely to go below the joint bar bolt or nut and above the top of the anchor. Pictured here with our square rail tong shackle; a hook shackle is also available. Loftis/Robbins offers a refurbish program for our anchor knockers!

Upper Roller, 132-141



PN: UR132

Dimensions: 4" x 4" x 5", 9 lbs.

Description: Four upper rollers guide the ball of the rail through the knocker. They are machined, heat treated, and set with a grease fitting. Each roller is designed to adjust in and out as necessary for different rail sizes.

Lower Roller, 132-141



PN: LR132

Dimensions: 4" x 4" x 5", 9 lbs.

Description: 4 lower rollers guide the base of the rail through the knocker. They are machined, heat treated, and set with a grease fitting. Each roller is designed to adjust in and out as necessary for different rail sizes.

Upper Roller, 115



PN: UR115

Dimensions: 4" x 4" x 5", 10 lbs.

Description: The 115 JR rollers are larger to fit the smaller rail profile. Four upper rollers guide the ball of the rail through the knocker. They are machined, heat treated, and set with a grease fitting. Each roller is designed to adjust in and out as necessary for different rail sizes.

Lower Roller, 115



PN: LR115

Dimensions: 4" x 4" x 5", 10 lbs.

Description: The 115 lower rollers are larger to fit a smaller rail profile. 4 rollers guide the base of the rail through the knocker. They are machined, heat treated, and set with a grease fitting. Each roller is designed to adjust in and out as necessary for different rail sizes.

Anchor Knocker Ears, LH/RH



PN: Left Hand: AK115/132LH.

PN: Right Hand: AK115/132RH

Dimensions: 11" x 8" x 7", 25 lbs.

Description: The knocker, "ear" is the contact item that actually removes the anchor from the rail. The sloped bottom side is hard-wire-welded to greatly extend the life of the ear in this violent application. The bolt kit is also available, with $\frac{5}{8}$ " Allen stock heads.

Anchor Knocker Ears, Bolt Kit

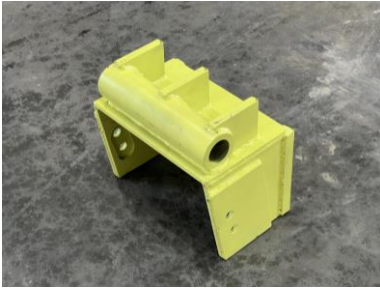


PN: AK132JR-BOLTKIT

Dimensions: ¾-16 x 2", 5 lbs.

Description: 4 Heavy Duty replacement bolts with lock washer key for the anchor knocker ears.

Anchor Knocker Guard Box



PN: AK452S

Dimensions: 14" x 13" x 8", 74 lbs.

Description: The Anchor Knocker Guard Box is the key safety element to the anchor knocker that stops the anchors from flying when they are forced off of the rail. This box is built from steel plates for durability and a rubber padding is installed where the anchor strikes, to lower noise pollution.

Box Threader (A Frame)



PN: BT600

Dimensions: 30" x 30" x 28", 325 lbs.

Description: The A Frame Threader is the largest of its class and offers unmatched durability and workload. The sturdy frame is built from steel and houses 4 machined and heat-treated rollers for threading any size rail.

Ball Threader



PN: BT500

Dimensions: 20" x 15" x 22", 300 lbs.

Description: The Ball Threader is made to thread continuously welded rail of any size. This heavy-duty threader is built from steel and the rollers are machined and heat treated for longer life on the job.

Rocker Panel (Ball Threader Rollers)



PN: BT500-01

Dimensions: 5" x 15" x 5", 30 lbs.

Description: The rocker panel is the bar and threader wheels used with the heavy-duty Ball Threader. These wheels are precision machined and heat treated for durability.

Lightweight Ball Threader



PN: BT500LW

Dimensions: 10" x 15" x 16", 105 lbs.

Description: The lightweight ball threader is designed to thread continuously welded rail. While being lighter and easier to handle, the machined, heat-treated rollers are made to last on the job.

Lightweight Ball Threader Wheel



PN: BT500LW-01

Dimensions: 6" x 6", 12 lbs.

Description: Machined in our shop from high-strength alloy steel, heat treated and fit with quality bearings to last. Replaceable in the field with a standard 1-13/16" wrench or socket.

Tong Threader, (M-Link)



PN: JR TT100-ML

Dimensions: 16" x 15" x 10", 134 lbs.

Description: Also known as a "Jefferson" rail threader, this rail threader will work on all sizes of continuous welded rail. The rollers can be replaced in the field. This threader comes with an oblong (M-LINK, pictured) for use with a hook.

Tong Threader, (D-Link)



PN: JR TT100-DL

Dimensions: 16" x 15" x 10", 142 lbs.

Description: Also known as a "Jefferson" rail threader, this rail threader will work on all sizes of continuous welded rail. The rollers can be replaced in the field. This threader comes with a square (D-LINK, pictured) for use with rail tongs.

Tong Threader Wheel



PN: JRTR10001ASSY

Dimensions: 4" x 6", 10 lbs.

Description: Manufactured in our shop from high-strength alloy steel, heat treated and fit with quality bearings to last. Replaceable in the field with a standard 1-13/16" wrench or socket.

Rail Tong, 10 Ton



PN: RDT10

Dimensions: 15" x 6" x 28", 95 lbs., 10 Ton WLL.

Description: Manufactured from high-strength alloy steel, designed to lift and manipulate rail; tested to 50,000 lbs. Every tong is individually magnetic particle tested, pull test certified, and engraved with a serial number to maximize safety.

Rail Tong, 8 Ton



PN: RDT8

Dimensions: 15" x 6" x 28", 82 lbs. 8 Ton WLL.

Description: Manufactured from high-strength alloy steel, designed to lift, and manipulate rail. Every tong is individually magnetic particle tested, pull test certified, and engraved with a serial number to maximize safety.

Rail Tong, 6 Ton



PN: RDT600

Dimensions: 15" x 6" x 21", 50 lbs. 6 Ton WLL.

Description: 6 Ton Rail Tongs are manufactured from high-strength alloy steel. These tongs feature two lifting handles and a rugged design for long-term field performance of lifting single lengths of rail.

Rail Tong, 3.3 Ton



PN: RDT-3.3

Dimensions: 9.5" x 3" x 13", 15 lbs. 3.3 Ton WLL

Description: Little Dawg Rail Tongs are lightweight, yet strong enough to lift single lengths of rail with ease. Designed to open automatically when lowered onto the head of a rail, this tool will handle all rail profiles, from 12-141 lb.

Lightweight Rail Puller



PN: LWRP830

Dimensions: 4" x 3" x 18", 23 lbs.

Description: Lightweight rail puller with shackle for dragging rail.

Wedge-Style Rail Puller



PN: R2100-01

Dimensions: 12" x 8" x 12", 60 lbs.

Description: The wedge style rail puller is designed for pulling rail by driving the wedge adjacent to the rail and locking it in place. Wedge and chain included.

Heavy Duty Cam Style Rail Puller



PN: CSR2100

Dimensions: 12"x 8" x 8" x 8", 86 lbs.

Description: The HD Cam Style Puller is machined from T1 steel for durability and strength. It has positive camlock action and a welded hard surface to prevent slippage. The unique cam design will accommodate all rail profiles from 100-141 lbs. The HD Cam Style Puller is designed to pull the heavy load in long pieces of rail.

Cyclops Rail Puller



PN: LRI231000B

Dimensions: 12"x 8" x 15", 81 lbs.

Description: The Cyclops II Rail Puller has positive camlock action to prevent slippage when pulling long lengths of rail. The unique cam design will accommodate all rail profiles from 100-141lbs. The Cyclops II Rail Puller has a 25-ton working load limit based on a safety factor of times 2, is manufactured from high-strength steel alloy, and is designed to pull 1/4-mile lengths of rail. Can be connected to a crane without a shackle.

Cart Towing Items:

Cushion Tow Bar, 4'



PN: BT-4C

Dimensions: 4' x 4" tubing long, 3" ear span with 1" pin holes, 2" x 1/4" tubing, 90 lbs.

Description: This short cushion tow bar has been engineered to 50,000 lbs. towing capacity. They are built with standard carrying handles and 3/8" safety chain.

Tow Bar, 4'



PN: BT-4

Dimensions: 4' long, 3" ear span with 1" pin holes, 2" x 1/4" tubing, 55 lbs.

Description: Our tow bars have been engineered to 20,000 lb. towing capacity. They are built with standard carrying handles and 3/8" safety chain with hooks connected to the bar on each end.

Tow Bar, 6'



PN: TB-6

Dimensions: 6' long, 3" ear span with 1" pin holes, 2" x 1/4" tubing, 65 lbs.

Description: Our tow bars have been engineered to 20,000 lb. towing capacity. They are built with standard carrying handles and 3/8" safety chain with hooks connected to the bar on each end.

Tow Bar, 8'



PN: BT-8

Dimensions: 8' long, 3" ear span with 1" pin holes, 2" x 1/4" tubing, 85 lbs.

Description: Our tow bars have been engineered to 20,000 lb. towing capacity. They are built with standard carrying handles and 3/8" safety chain with hooks connected to the bar on each end.

Tow Bar, 10'



PN: BT10

Dimensions: 10' long, 3" ear span with 1" pin holes, 2" x 1/4" tubing. 105 lbs.

Description: Our tow bars have been engineered to 20,000 lb. towing capacity. They are built with standard carrying handles and 3/8" safety chain with hooks connected to the bar on each end.

6' Standard/Pintle Loop Tow Bar



PN: BTPL-6

Dimensions: 6' long, 3" ear span with 1" holes one end, pintle loop one end, 2" x 1/4" tubing

Description: these custom tow bars are made to order for customers, per their needs and specs. They come standard carrying handles and 3/8" safety chain and hooks welded to the bar near each end. The standard/pintle loop tow bar can be made custom to any length.

6' Heavy Duty Push Bar



PN: PBHD-816

Dimensions: 6' x, 3", with 1" holes one end, 3" x 3/8" tubing,

Description: These custom tow bars are made to order per your needs and specs. They come standard with carrying handles and 3/8" safety chain and hooks connected to the bar near each end. Built to work with our Crane Hitch Swivel (CH101).

8' Heavy Duty Push Bar



PN: PBHD8-1

Dimensions: 8' x 3", with 1" holes one end, 3" x 3/8" tubing,

Description: These custom tow bars are made to order per your needs and specs. They come standard with carrying handles and 3/8" safety chain and hooks connected to the bar near each end. Built to work with our Crane Hitch Swivel (CH101).

10' Heavy Duty Push Bar



PN: PBHD10

Dimensions: 10' x 3", with 1" holes one end, 3" x 3/8" tubing,

Description: These heavy-duty tow bars with offset ears are made to work in conjunction with our crane hitch swivel. They are designed to endure the heaviest work. They come standard with carrying handles and 3/8" safety chain and hooks connected to the bar near each end. Built to work with our Crane Hitch Swivel (CH101).

3" Bent Tow Bar

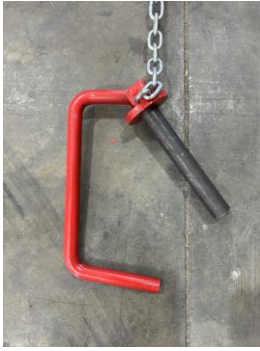


PN: BTB2

Dimensions: 31" x 3" x 2", 16 lbs.

Description: The bent tow bar is a custom tow bar for towing the Loftis Robbins Bulldog Grinder Cart. It is designed to work with multiple carts that sit lower than the machine towing.

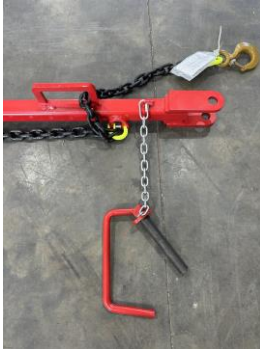
Push Cart Safety Hitch Pin



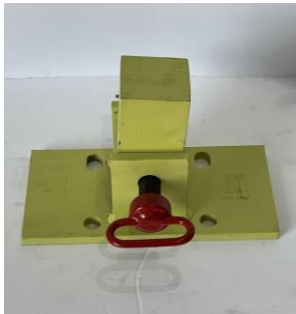
PN: PCSH100

Dimensions: 5" x 10" 2 2-1/2", 5 lbs.

Description: Our Safety Hitch Pins are longer than standard pins and have a handle that keeps your pin mounted safely. They are welded up in our shop and come with the connection chain to link them to our tow bars.



Crane Hitch Swivel



PN: CH101

Dimensions: 7" x 6" x 12", 35 lbs.

Description: The Crane Hitch Swivel connects a Loftis/Robbins HD Push Bar to a Crane or Railavator, which moves vertically and horizontally. With 1" steel base, 1/2" steel ears, and 3" x 3" x 6" steel swivel with 1" pin holes, this hitch is sturdy, durable, and effective.

Rail Welding Items:

Bulldog Web Grinder



PN: BL-101

Dimensions: 73" x 37" x 27", 540 lbs.

Description: The Bulldog web grinder will quickly and safely remove rust and scale from the rail in order to secure a good electrical connection before the weld. Made in America and sold at Loftis Robbins Inc.

Bulldog Web Grinder Cart



PN: CT-303

Dimensions: 68" x 57" x 14", 255 lbs.

Description: The Bulldog Grinder Cart is made with substantial, durable steel, rollers, and wheels.

Bulldog Web Grinder Cart Wheel



PN: CT303W

Dimensions: 7" x 5", 27 lbs.

Description: The Bulldog Web Grinder Cart Wheel and shaft are machined from high strength steel and built for durability. These are replaceable in the field with standard tools.

Welding Spark Shield



PN: SS-505

Dimensions: 33" x 21" x 14" (at base), 30 lbs.

Description: Our spark shield is light enough to carry around, small enough to store on a machine, and big enough to do the job - safely control keep sparks while cutting the rail. Welded steel with an extra blocking panel inside.

Rail Shear, Latch Style 136



PN: RS136

Dimensions: 12" x 3" x 11", 60 lbs.

Description: Our Rail Shear, custom built per rail size, is the best in the business. Built with tool steel (not stainless), and with a patiently and perfectly welded hardened shear surface and precise fit to the rail, our rail shear operates for roughly \$1 per cut. We also make custom shears per customer drawings.

Rail Shear, Latch Style 115



PN: RS115

Dimensions: 12" x 3" x 11", 60 lbs.

Description: Our Rail Shear, custom built per rail size, is the best in the business. Built with tool steel (not stainless), and with a patiently and perfectly welded hardened shear surface and precise fit to the rail, our rail shear operates for roughly \$1 per cut. We also make custom shears per customer drawings.

16" Cut Off Wheels



PN: COW16

Dimensions: 16" x 1/2", 1" Arbor, 3 lbs. ea./ 31 lbs. per box

Description: Made for fixtured rail cutting, the Track Star 16' Blade works with any standard gasoline rail saw, and cuts rail at up to 4800 rpm. These are sold in boxes of 10 ea.

26" Cut Off Wheels



PN: COW26

Dimensions: 26" x 1/2", 1" Arbor, 14 lbs. ea./ 70 lbs. per box

Description: Made for fixtured rail cutting, the Allison 26" Cut Off Wheel is one of the best out there; they are durable and get as many cuts as any blade made. The 26" Allison cuts rail at up to 2100 rpm. These are sold in boxes of 5

Lift/Pull/Tie Down Items:

Double Backhoe Swivel



PN: DBH100

Dimensions: 25" x 6" x 3", 17 lbs.

Description: A double swivel hook set up, joined with a ½" hammer lock rated at 17,000 lift capacity. Ideal for backhoe or equipment truck lifting.

25 Ton Screw Pin Shackle, 1-¾"



PN: ASPS25

Dimensions: 12" x 9" x 5", 31 lb.

Description: Crosby Alloy Screw Pin Shackle. Workload limit of 25 tons. Built for the tough, heavy work of lifting and pulling.

12 Ton Screw Pin Shackle, 1-¼"



PN: ASPS12T

Dimensions: 8" x 6" x 3", 10 lb.

Description: Crosby Alloy Screw Pin Shackle. Workload limit of 12 tons. Built for the tough, heavy work of lifting and pulling.

8.5 Ton Screw Pin Shackle, 1”



PN: ASPS8.5T

Dimensions: 8" x 6" x 3", 5 lb

Description: Crosby Alloy Screw Pin Shackle. Workload limit of 8.5 tons. Built for the tough, heavy work of lifting and pulling.

4.75 Ton Screw Pin Shackle, 3/4”



PN: ASPS4.75T

Dimensions: 8" x 6" x 3", 2 lb.

Description: Crosby Alloy Screw Pin Shackle. Workload limit of 4.75 tons. Built for the tough, heavy work of lifting and pulling.

Grab Hook Slack Adjuster “Crazy Hook”



PN: GHSA-01

Dimensions: 7" x 4" x 4", 6 lbs. 6 Ton WLL

Description: The “Crazy Hook” is specifically designed to allow for chain slack to be adjusted and then re-secured in the slot. Ideal for use for securing machines to an equipment train.

15" Wrecker Hook



PN: WR15

Dimensions: 15" x 2" x 8", 6 lbs.

Description: Designed specifically for towing and transport, this hook is forged grade 70 steel with a 5400 lb. working load limit. Sold alone or as part of a loading strap assembly.

Clevis Grab Hook, 5/8"



PN: HOOKCG-5/8

Dimensions: 7" x 5" x 1", 4 lbs.

Description: Standard CM 5/8" clevis grab hook, generally fixed to chains for lifting and tying down equipment.

Clevis Grab Hook, 1/2"



PN: HOOKCG-1/2

Dimensions: 6" x 4" x 1", 3 lb.,

Description: Standard CM 1/2" clevis grab hook, generally fixed to chains for lifting and tying down equipment. 11,300 lb. WLL

Clevis Grab Hook, 3/8"



PN: HOOKCG-3/8

Dimensions: 5" x 3" x 1", 1 lb.

Description: Standard CM 3/8" clevis grab hook, generally fixed to chains for lifting and tying down equipment. 6,600 lb. WLL

Clevis Grab Hook, 1/4"



PN: HOOKCG-1/4"

Dimensions: 4" x 2" x 1", 1/2 lb.

Description: Standard CM 1/4" clevis grab hook, generally fixed to chains for lifting and tying down equipment. 4,700 lb. WLL

Clevis Sling Hook, 5/8"



PN: HOOK-5/8G

Dimensions: 10" x 7" x 2", 9 lbs.

Description: Standard Gunnebo clevis 5/8" sling hook w/latch, generally hammer-locked to chains for lifting. 18,100 lb. WLL

Clevis Sling Hook, 1/2"



PN: HOOK-1/2G

Dimensions: 9" x 6" x 2", 5 lbs.

Description: Standard Gunnebo clevis 1/2" sling hook w/latch, generally hammer-locked to chains for lifting. 12,000 lb. WLL

Clevis Sling Hook, 3/8"

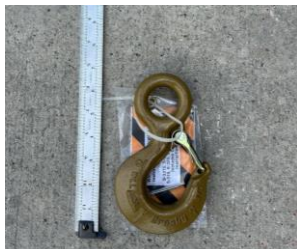


PN: HOOK-3/8G

Dimensions: 7" x 4" x 1", 3 lbs.

Description: Standard Gunnebo clevis 3/8" sling hook w/latch, generally hammer-locked to chains for lifting. 7,100 lb. WLL

Eye Slip Hook w/Latch, 3 Ton



PN: HOOK-3/8

Dimensions: 7" x 4" x 1", 2 lbs.

Description: Standard Crosby 3/8" eye slip hook w/latch used on Loftis Robbins tow bars.

Crane Swivel Hook w/Latch, 10 Ton



PN: HOOK-10T

Dimensions: 16" x 8" x 2", 27 lbs. 10 Ton WLL

Description: Standard Crosby 10 Ton Crane Swivel Hook, for lifting with excavators and other cranes on the rail.

Ratchet Binder w/Hooks



PN: RBHO-1/2

Dimensions: 32" x 15", 16 lbs.

Description: Standard Crosby 1/2" ratchet binder with hooks for securing equipment during transportation.

Ratchet Binders Without Hooks



PN: RBNO-1/2

Dimensions: 18" x 15", 9 lbs.

Description: Standard Crosby 1/2" ratchet binder with no hooks for securing equipment during transportation.

Hammer Lock, 3/8"



PN: HL3/8G

Dimensions: 4" x 3" x 1", 1 lb.

Description: Standard Gunnebo 3/8" hammer lock, used to link chains to hooks or to the deck of an equipment train. 7,100 lb. WLL

Hammer Lock, 1/2"



PN: HL-1/2G

Dimensions: 5" x 3" x 1", 2 lbs.

Description: Standard Gunnebo 1/2" hammer lock, used to link chains to hooks or to the deck of an equipment train. 12,000 lb. WLL.

Hammer Lock, 5/8"



PN: HL5/8G

Dimensions: 6" x 5" x 1", 5 lbs.

Description: Standard Gunnebo 5/8" hammer lock, used to link chains to hooks or to the deck of an equipment train. 18,100 lb. WLL

Pintle Loop, 1-5/8"



PN: PL202

Dimensions: 3" ID x 6.25" OD x 1 5/8", 9 lbs.

Description: Standard Cast Pintle loop for Pintle Loop Tow bars; weld on.

Safety Hitch Pin, 7-1/2"



PN: SHP300

Dimensions: 7-1/2" x 1", 3 lbs.

Description: Multipurpose, safety hitch pin, straight. Used in conjunction with our Crane Hitch Swivel (CH101)

Safety Hitch Pin, 6-1/2"



PN: SHP301

Dimensions: 6-1/2" x 3/4", 3 lbs.

Description: Multipurpose, safety hitch pin, straight.

Grade 100 Chain, 5/8"



PN: CHAIN5/8

Dimensions: 5/8" Chain

Description: Heavy Duty 5/8" chain for lifting, pulling, tying down and all other relevant purposes.

Grade 100 Chain, 1/2"



PN: CHAIN1/2 G100

Dimensions: 1/2" Chain

Description: Heavy Duty 1/2" chain for lifting, pulling, tying down and all other relevant purposes.

Grade 100 Chain, 3/8"



PN: CHAIN3/8

Dimensions: 3/8" Chain

Description: Heavy Duty 3/8" chain for lifting, pulling, tying down and all other relevant purposes.

Mechanic Sling Kit



PN: MSK146

Dimensions: 25 lbs., 2 ea. plastic bags

Description: the following items are in this kit:

Bag 1 includes:

- (2) ea. 1" X 4' 2 Ply EE Sling
- (2) ea. 1" X 6' 2 Ply EE Sling
- (2) ea. 1" X 8' 2 Ply EE Sling
- (2) ea. 2" X 4' 2 Ply EE Sling
- (2) ea. 2" X 6' 2 Ply EE Sling
- (2) ea. 2" X 8' 2 Ply EE Sling

Box 2 Includes

- (2) ea. $\frac{3}{4}$ ", 4.75 Ton Screw Pin Shackles
- (2) ea. 1", 8.75 Ton Screw Pin Shackles
- (2) ea. 1 $\frac{1}{4}$ ", 12 Ton Screw Pin Shackles

Backhoe Hi-Rail Gear:

Backhoe Bucket Wheels, Double Leg



PN: BBW-100

Dimensions: 12" x 7" x 9", 67 lbs. ea., 134 lbs. per set

Description: Our bucket wheels are machined from good steel, mounted on solid 1" steel legs, and fitted with quality bearings to take the load of hi-tailing your backhoe safely and smoothly down the track. They will weld in gauge right on the bottom/back of your backhoe bucket.

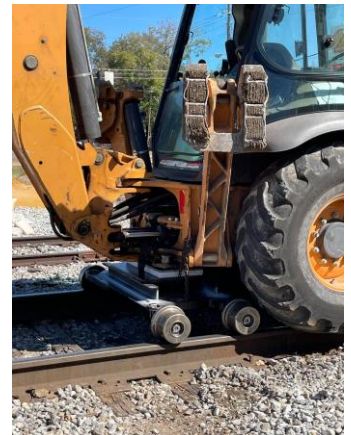
Rail Kat



PN: 210388

Dimensions: 30" x 65" x 17"

Description: The Rail Kat is a sturdy steel cart designed to go under the rear of a backhoe for tramping on the rail. It is built from high-strength steel for strength and durability. The wheels are machined from high strength alloy.



Backhoe Bucket Wheels, Single Leg



PN: BBW-101

Dimensions:

Description: Our single leg bucket wheels are machined from high strength steel, mounted on a solid 1.25" steel leg, and fitted with quality bearings to take the load of hi-railing your backhoe safely and smoothly down the track. They will weld in gauge on the bottom/back of the backhoe bucket.

Ballast Regulator Items:

Standard Broom Element



PN: BCRE200

Dimensions: 2" x 18" round, 2.5 lbs.

Description: Solid rubber broom elements available in boxes of 300 ea. (700 lb. box). This is a dependable, durable, and economical broom element that is being used around the world.

Broom Clamp, Standard



PN: BCR200

Dimensions: 5" x 4" x 3"

Description: Standard clamp to secure broom elements and knocker elements on ballast regulator brooms boxes.

24" Ballast Regulator Wheel



PN: BRW24

Dimensions: 24" x 5.75", 319 lbs.

Description: 24" x 10 Hole Wheels for Ballast Regulator Machines. Manufactured to AREMA specifications, with AARM201, Grade C cast steel. The standard 10-hole mount is compatible with either phenolic rings (Insulated) or steel rings (non-Insulated).

28" Ballast Regulator Wheels



PN: BRW28

Dimensions: 28" x 5.75", 432 lbs.

Description: 28" x 10 Hole Wheels for Ballast Regulator Machines. Manufactured to AREMA specifications, with AARM201, Grade C cast steel. The standard 10-hole mount is compatible with either phenolic rings (Insulated) or steel rings (non-Insulated).

General Track Tools:

Aluminum Tie Tongs



PN: LRIALUTT2

Dimensions: 31" x 11" x 6", 8 lb.

Description: Efficient lightweight design for ease of use and long-term performance. Ergonomic handles and designed with two heat treated, high strength replaceable tips.

Replaceable Tie Tong Tips



PN: LRIALUTT2-RT

Dimensions: 3" x 1", 1 lb.

Description: Replacement Tips for the Aluminum Tie Tongs (LRIALUTT2)

Switch Broom



PN: SBMC2310A

Dimensions: 56" x 11" x 6", 3 lb.

Description: Efficient lightweight design for ease of use and long-term performance. Ergonomic handles and designed with two heat treated, high strength replaceable tips.

Square Point Track Shovel



PN: IRS-TRA33003

Dimensions: 44" x 9" x 2", 7 lbs.

Description: Square head shovel for jobs on the track shoveling ballast in between railroad ties.

Hammer/Maul Handle, 36" Safety Grip



PN: THSRH36

Dimensions: 36" x 2" x 2", 2 lbs. (box is 48 lbs., 38" x 12" x 5")

Description: We stock hammer and maul replacement handles, made from Tennessee hickory, the best on the rail. They come 24 to a box and are ready to ship ARO.

Claw Bar



PN: WT163

Dimensions: 60" x 8" x 4", 33 lbs.

Description: Forged from high carbon steel, the claw bar is an essential tool used to pull spikes, either on its own or with the 4 ball spike puller. Stocked and sold at Loftis/Robbins.

4 Ball Spike Puller



PN: WTC9000

Dimensions: 12" x 2" x 1", 3 lbs.

Description: The 4 Ball Spike Puller is used in conjunction with the claw bar to remove spikes from the track.

Diamond Tip Slate Bar, 5'



PN: SBP-05

Dimensions: 60" x 3" x 1", 14 lbs.

Description: The pry slate bar is a solid forged tool useful for aligning plates, prying things loose, or even as a jack handle.

Diamond Tip Slate Bar, 4'



PN: SBP-04

Dimensions: 48" x 3" x 1", 11 lbs.

Description: The pry slate bar is a solid forged tool useful for aligning plates, prying things loose, or even as a jack handle.

Diamond Tip Slate Bar, 3'

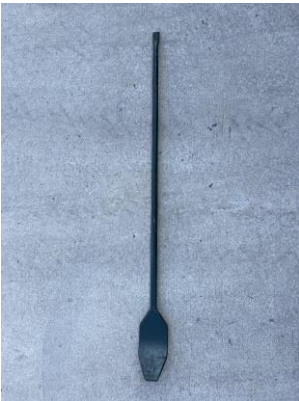


PN: SBP-03

Dimensions: 36" x 3" x 1", 8.5 lbs.

Description: The pry slate bar is a solid forged tool useful for aligning plates, prying things loose, or even as a jack handle.

Nipping Bar, 58"



PN: NB4123-90

Dimensions: 58" x 10" x 5", 21 lbs.

Description: Long curved paddle bar used to manually lever up and realign rail ties with the rail.

Ballast Rake



PN: SBP-04

Dimensions: 54" x 8" x 6", 6 lbs.

Description: 4 tine rake for clearing ballast.

Track Adze



PN: WT1202

Dimensions: 34" x 13" x 4", 8 lbs.

Description: Made from high carbon steel, the Track Adze is used for shaping railroad ties and bridge timbers.

Railroad Pick, 36"



PN: WT3222-36

Dimensions: 36" x 25" x 2", 9 lbs.

Description: The solid forged Railroad pick, used on the track for generations.

Square Head Track Punch, 24"



PN: WT21822-24

Dimensions: 24" x 13" x 2", 6 lbs.

Description: Short handled track punch, used to punch bolts out.

Square Head Track Punch, 36"



PN: WT21822

Dimensions: 36" x 14" x 2", 6.5 lbs.

Description: With a Grade B Steel Head, the square-head Track Punch is a driving, riveting and backing-out tool that is used to cut through rusted bolts.

Spike Lifter, RH



PN: SJ-36 or IRS-TAHT12900SGHP

Dimensions: 36" x 9" x 3", 8 lbs.

Description: Grade B forged steel tool used to remove spikes, with sledgehammer assist. Right hand

Spike Lifter, LH



PN: SJ-36 or IRS-TAHT12901SGHP

Dimensions: 36" x 9" x 3", 8 lbs.

Description: Grade B forged steel tool used to remove spikes, with a sledgehammer assist. Left hand.

10 lb. Spike Maul, 36"



PN: IRS-SM10

Dimensions: 36" x 15" x 3", 12 lbs.

Description: Forged from Grade B steel, the Spike Maul is a tough, specialized hammer used for driving railroad spikes through tie plates and into crossies.

12 lb. Sledgehammer, 36"



PN: SHHD12

Dimensions: 36" x 8" x 3", 14 lbs.

Description: The Grade B forged steel, double faced sledge is used for driving spikes and other general purposes on the job.

10 lb. Sledgehammer, 36"



PN: SHHD10

Dimensions: 36" x 7" x 3", 12 lbs.

Description: The Grade B forged steel, double faced sledge is used for driving spikes and other general purposes on the job.

2 lb. Sledgehammer, 36"



PN: SHHD2

Dimensions: 36" x 4" x 2", 4 lbs.

Description: The Grade B forged steel, double faced sledge is used for hammering and driving purposes on the job. This smaller version of the standard sledge is used in hard-to-reach places and for jobs that don't require the heavy-duty hammer.

Plate Hook, 32"



PN: P1000-04

Dimensions: 32" x 1", 2.4 lbs.

Description: The LRI Plate Hook is built with 1" steel tubing. The notched foot design is used for locking into and moving tie plates with ease.

Plate Hook, 36"



PN: P1000-05

Dimensions: 36" x 1", 2.6 lbs.

Description: The LRI Plate Hook is built with 1" steel tubing. The notched foot design is used for locking into and moving tie plates with ease. The longer, 36" version is more suitable for taller workers.

Plate Stick, 33"



PN: P1000-UPRR-33

Dimensions: 33"x 1", 1.8 lbs.

Description: The Plate Stick is built with lightweight but strong conduit tubing and a hardened steel working end that is used for pulling, pushing, and picking up and moving tie plates on the track.

Plate Stick, 36"



PN: P1000-UPRR-36

Dimensions: 36" x 1", 2 lbs.

Description: The Plate Stick is built with lightweight but strong conduit tubing and a hardened steel working end that is used for pulling, pushing, and picking up and moving tie plates on the track. The longer, 36" version is more suitable for taller workers.

Plate Puller, 31"

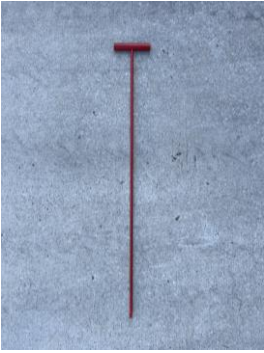


PN: P2000-02

Dimensions: 31" x 6", 1.8 lbs.

Description: Forged from high carbon steel, the claw bar is an essential tool used to pull spikes, either on its own or with the 4 ball spike puller. Stocked and sold at Loftis/Robbins.

Plate Puller, 42"



PN: P2000-01

Dimensions: 42" x 6", 1.4 lbs.

Description: Forged from high carbon steel, the claw bar is an essential tool used to pull spikes, either on its own or with the 4-ball spike puller. Stocked and sold at Loftis/Robbins.

Portable Derail, LH



PN: PD-6L

Dimensions: 18" x 14" x 6", 42 lbs.

Description: The PD-6 is a single throw left hand or right-hand Nolan derail which works on 80lb-141lb rail. It easily fits on the track, and it requires no special tools to mount. Fabricated from high strength steel and will derail all rolling stock, including 6-axle locomotives.

NOTE: Flags and staff sold separately.

Manual Track Jack/Tall



PN: TJ15T

Dimensions: 18" x 9" x 6", 104 lbs. 15-ton capacity

Description: The Enerpac (Simplex) A17 high model manual track jack with aluminum frame, 13" stroke. A time-tested, widely used track jack that is designed for lifting sections of rail.

Hydraulic Track Jack/Tall



PN: TJ10TT

Dimensions: 10" x 9" x 6", 45 lbs. 10-ton capacity

Description: The Enerpac (Simplex) JT105LS high model manual track jack with aluminum frame. A time-tested, widely used track jack that is designed for lifting sections of rail.

Hydraulic Track Jack/Short



PN: TJ15T

Dimensions: 10" x 9" x 6", 45 lbs. 10-ton capacity

Description: The Enerpac (Simplex) JT105LS high model manual track jack with aluminum frame. A time-tested, widely used track jack that is designed for lifting sections of rail. 36" steel lever handle included.

3 Piece Rail Alignment Tool



PN: RAT4023-74

Dimensions: 12" x 6" x 24", 76 lbs.

Description: Bring rails back into gauge after a derailment so rerailing can proceed. Cars can freely pass over rail-pull clamp plates. Plates are solid formed 1/2" steel. No welded joints to crack.

HD Expander/Puller/Base



PN: RGEP2310A

Dimensions: 2" x 2-½" x 60", 41 lbs.

Description: Aligning tool designed for correcting wide or tight gauge. Alignment is achieved from the base of the rail. A great tool for rail change out applications or restoring gauge quickly and easily in derailment areas and holding gauge during tie replacement.

HD Expander/Puller/Ball



PN: RGEP2310B

Dimensions: 2" x 5-½" x 60", 41 lbs.

Description: Aligning tool designed for correcting wide or tight gauge. Alignment is achieved from the ball of the rail. A great tool for rail change out applications or restoring gauge quickly and easily in derailment areas and holding gauge during tie replacement.

Lightweight Rail Shoe



PN: RSL800

Dimensions: 20" x 6" x 5", 15 lbs.

Description: The lightweight rail shoe fits over the end of the rail to make it slide across the gravel rather than dig in. Works for moving 10', 39', or 1400' pieces of rail, 115-141 lb. rail.

Aluminum Rail Block



PN: ARB600

Dimensions: 15" x 12" x 4", 11 lbs.

Description: Diamond plate aluminum, welded block for suspending the rail to thread the Anchor Knocker (AK450JR) onto the rail.

Aluminum Ramp Block



PN: ARB603

Dimensions: 27" x 12" x 6", 23 lbs.

Description: Diamond plate aluminum welded ramp block with a 15" low rise ramp, used for mounting track equipment onto and off of the rail.

25' Gauge Tape Measure



PN: MTS25LRI

Dimensions: 4" x 4" x 1", 2 lbs.

Description: 25' Tape Measure with standard gauge markings on the tape.